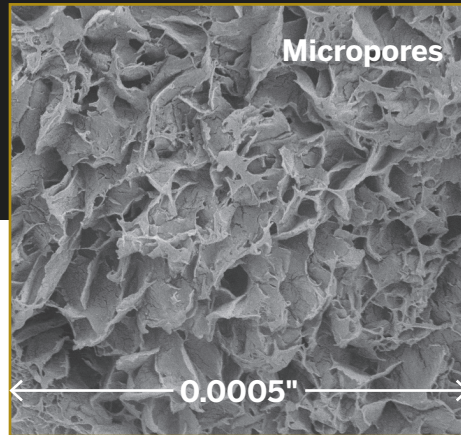


Solid lubrication is the permanent solution for lubrication-related failures.

Minimize the risk of machinery failures and premature wear, especially for hard-to-reach applications. Turner Protected by Lubrilife gives you confidence by taking the guesswork out of bearing maintenance.



Standard bearing seals not enough to prevent contamination ingress?

- ✓ Lubrilife's solid lubrication is a polymer that completely envelops rolling elements — it acts as a seal to keep contaminants out.

Experiencing too many lubrication-related failures?

- ✓ Micropores in Lubrilife polymer provide oil for the life of the bearing — no more lubrication lapses or grease incompatibilities.

Lubrication and maintenance costs affecting your bottom line?

- ✓ High-quality lubricants and strict maintenance schedules require time and money — avoid the costs associated with grease maintenance.

Eliminate stoppages and product losses caused by grease lubrication.



PROTECTS

Lubrilife fills the entire bearing cavity without impeding the rolling elements.



SEALS

Lubrilife acts as an additional seal, in conjunction with the bearing seals.



FOR LIFE

Lubrilife lasts the entire life of the bearing. Never manually grease a bearing again.

Frequently Asked Questions

What are the temperature limitations?

The current bearings can operate at an ambient temperature range of -40°F to 195°F (the internal bearing temperature can be 265°). The lowest temperature limit is limited by the oil, while the upper-temperature limit is limited by the polymer material.

What are the RPM limitations?

Deep groove ball bearings can operate with a speed factor of 300,000. Speed Factor = (Bearing Bore (mm) + Bearing OD (mm)) / 2 x (RPM)

Do these bearings come with a warranty?

The warranty is the same as other Baart products. One year warranty for materials and workmanship.

What oil is used?

The oil is a full synthetic with additives. Food grade options are H1 certified for incidental food contact.

Is one seal left off the bearing like other solid oils?

While permanent lubrication is superior to grease in excluding contaminants from the bearing, it performs best when used in conjunction with both bearing seals. Lubrilife bearings use both oil seals.

When will the bearings be available?

Turner L4L is available now.

How do you differentiate between a standard Axis, Mariner, or Turner part number and one with Lubrilife permanent lubrication?

The nomenclature has the suffix L4L (Lubricated for Life).

If you have both standard and Lubrilife units on your equipment how do you tell which ones need to be greased and which ones shouldn't?

Lubrilife housings lack a grease port or zerker, but the inner ring of the bearing will also have the L4L identifier to prevent accidents in mismatched housings.

For design purposes, how do you determine an approximate life?

You can learn more about calculating approximate life at: <https://baartgroup.com/bearing-life/>

Is a high temperature version available?

It is currently in development.

Are there different types available?

Food Grade and Standard.

Is Turner Protected by Lubrilife right for your application?

Visit TurnerBearing.com to contact us.